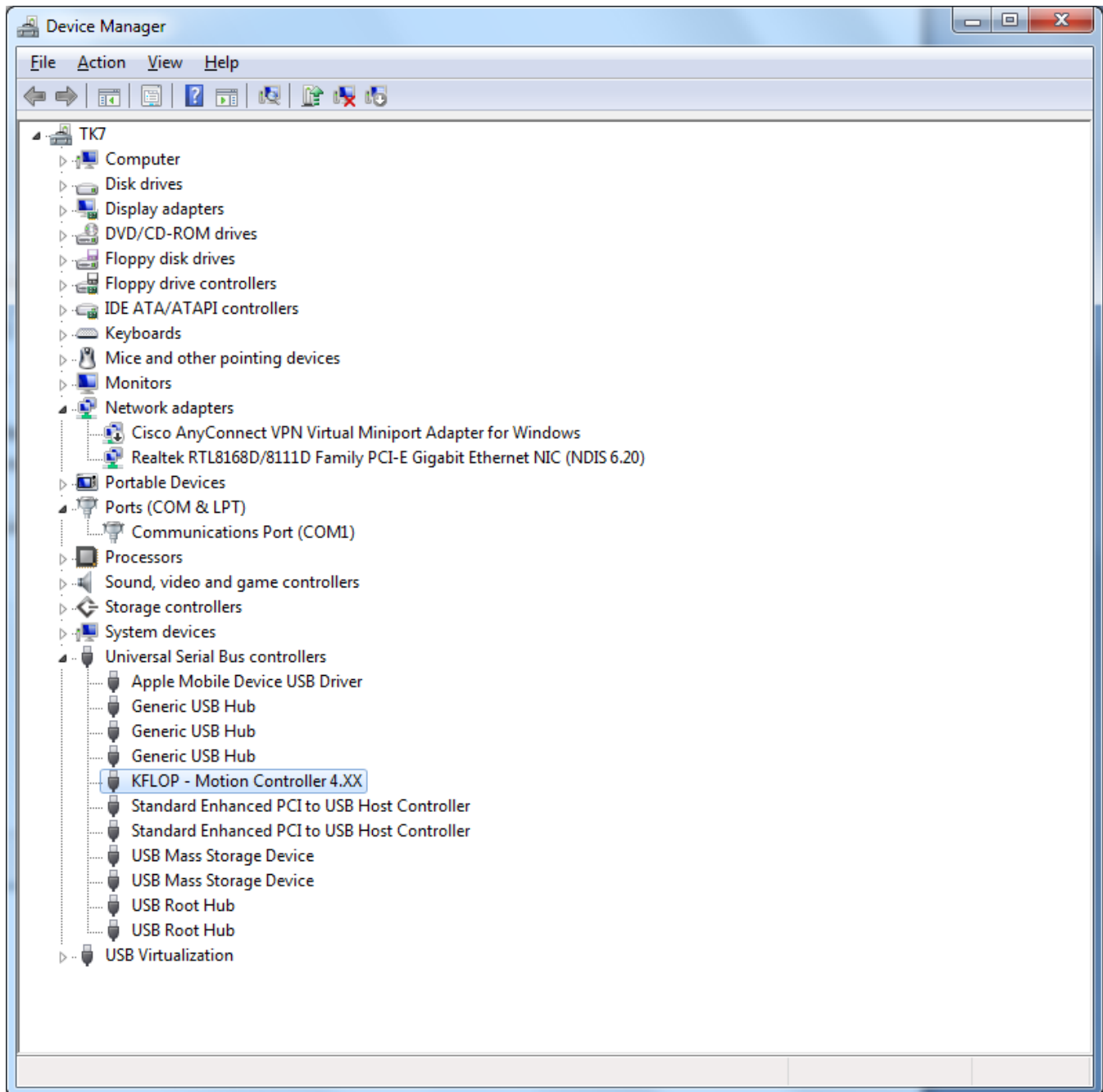


# Virtual COM Port Driver Installation

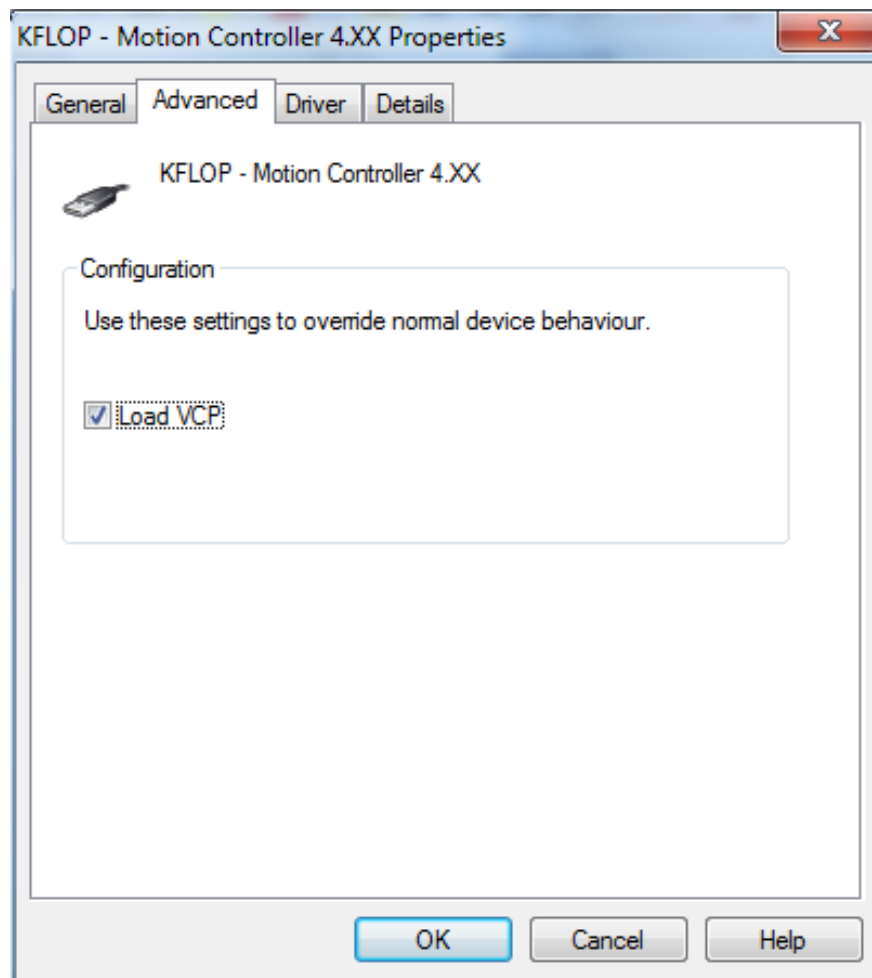
The Virtual COM Port Driver allows applications to send Script Commands to KFLOP as if it were connected as a Serial COM Port. This method is an alternate to using our much more powerful KMotion Libraries. Dynamotion's Software Applications and examples do not need to have this driver installed. It is only useful if you have some legacy Application that cannot make use of the KMotion Dynamic Linked Libraries, cannot be modified, but can communicate to a COM Port.

First install KFLOP normally using our USB Drivers. When successful there should be a KFLOP entry in Device manager as shown below:

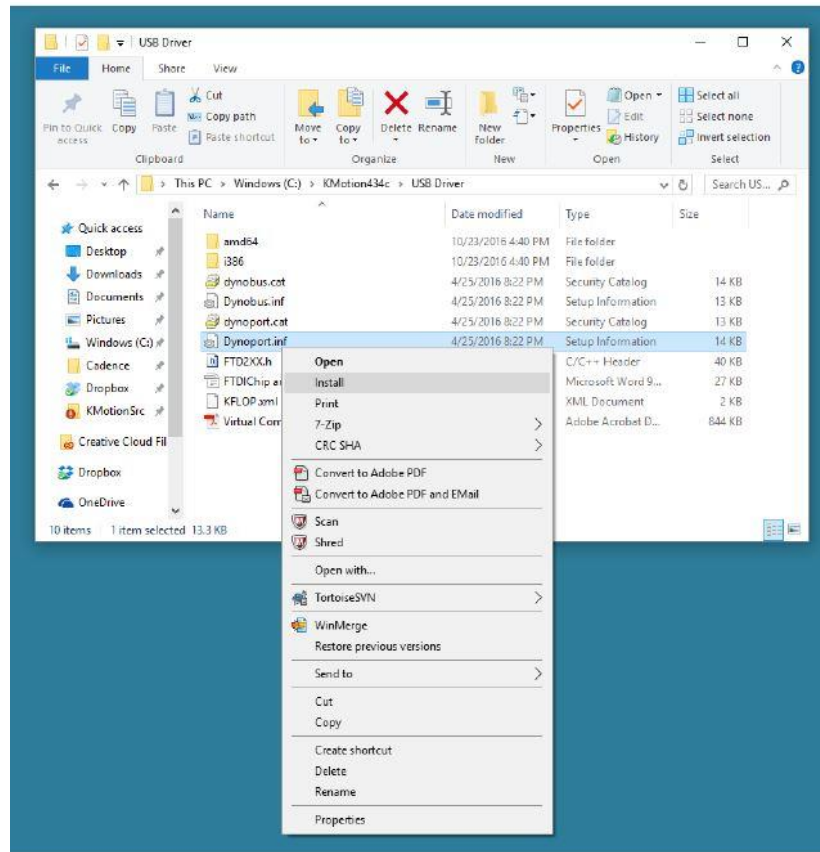


Now select **“Properties”** – **“Advanced”** – **“Load VCP”** (Virtual Com Port). Press **OK**.

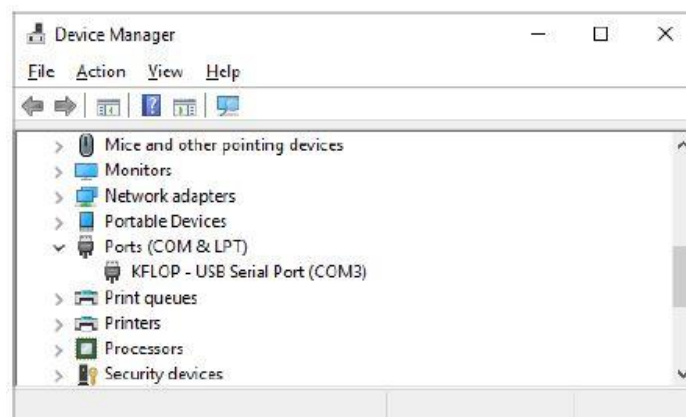
(See below if the Advanced Tab is not present)



**Note:** if the Advanced Tab is not present, install the Dynamotion Com Port Driver by navigating to the USB Driver Directory, right-click on Dynoport.inf, click **Install**, and **Allow** the driver to load.



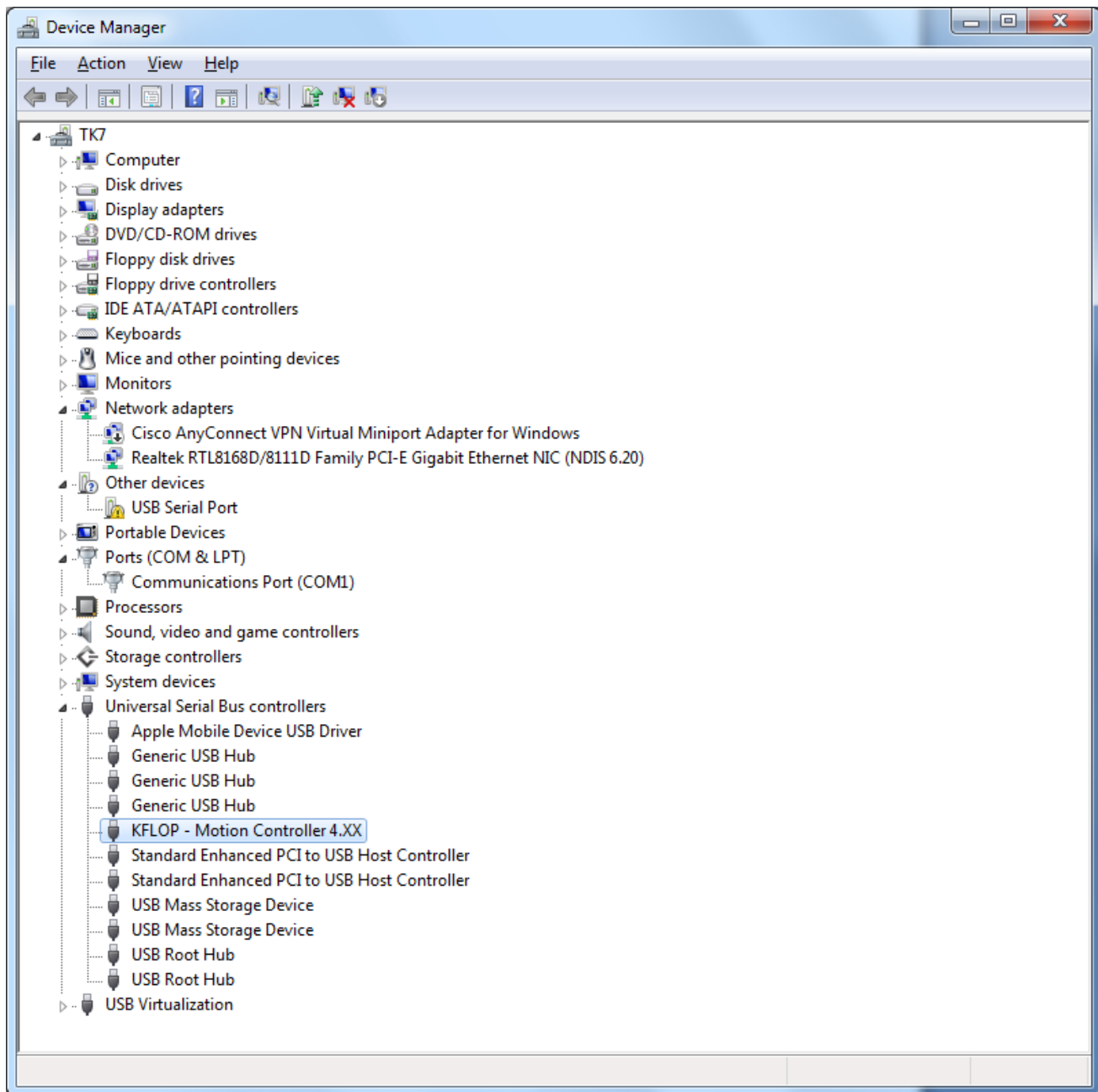
Cycling Power on KFLOP should then install the COM Port Driver completely without requiring the other steps listed below. Device Manager should now show:



**Note:** if you receive an error: "The INF file you selected does not support this method of installation", you might try this alternate method using Device Manager. Delete/Rename the Dynobus.inf file so Device Manager cannot choose it.

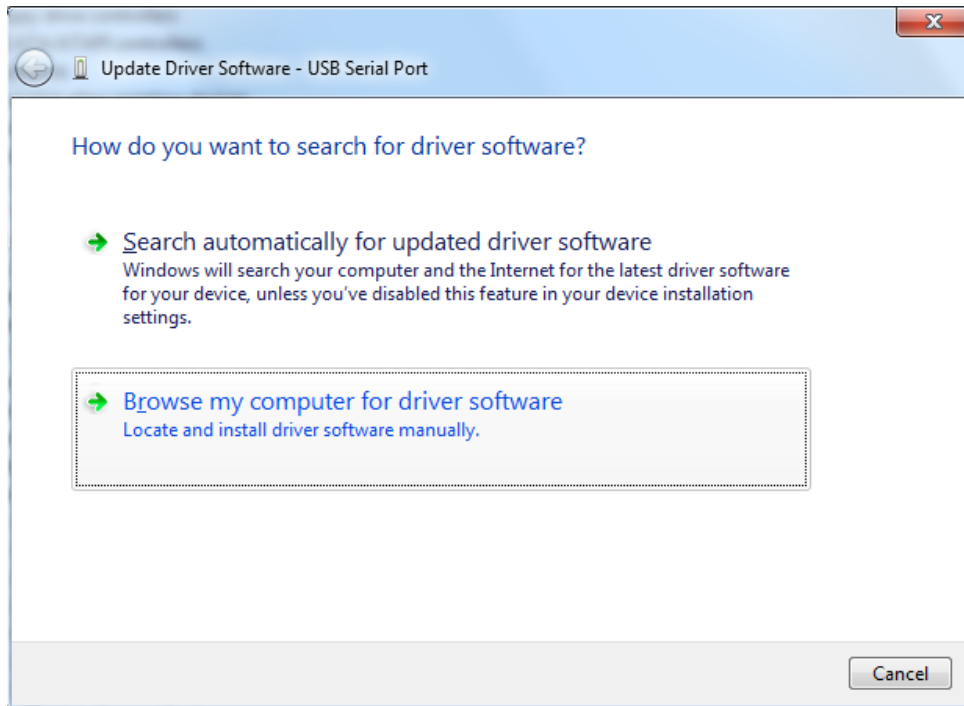
[The INF File You selected does not support this method of installation - Windows 7 Help Forums](#)

Then unplug/re-plug KFLOP. There should now be a USB Serial Port – but missing the driver.

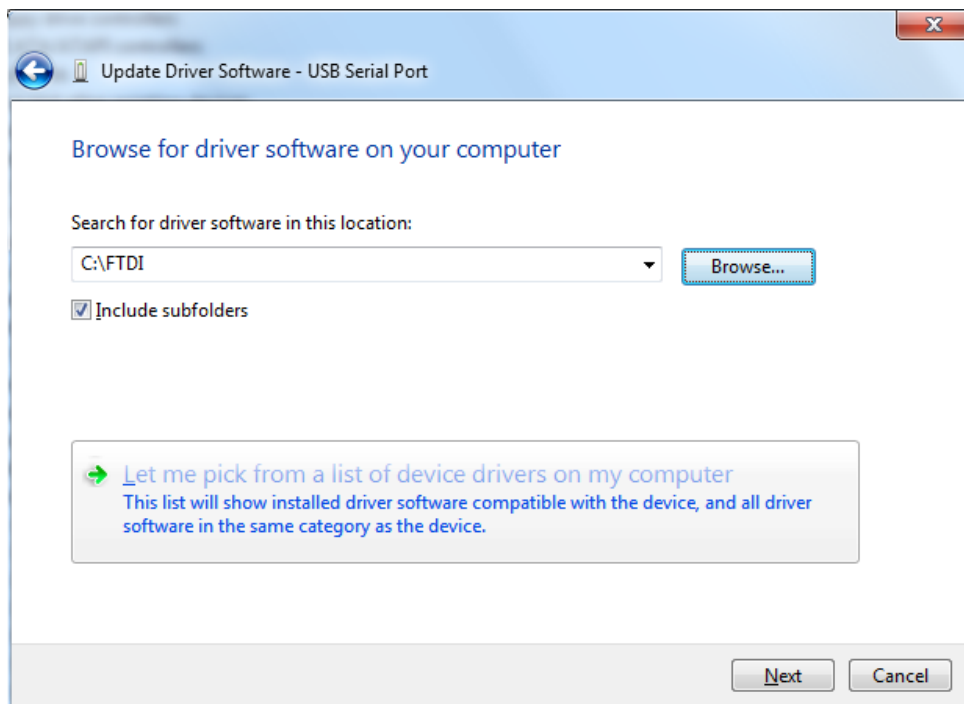


On USB Serial Port right click **“Update Driver”**.

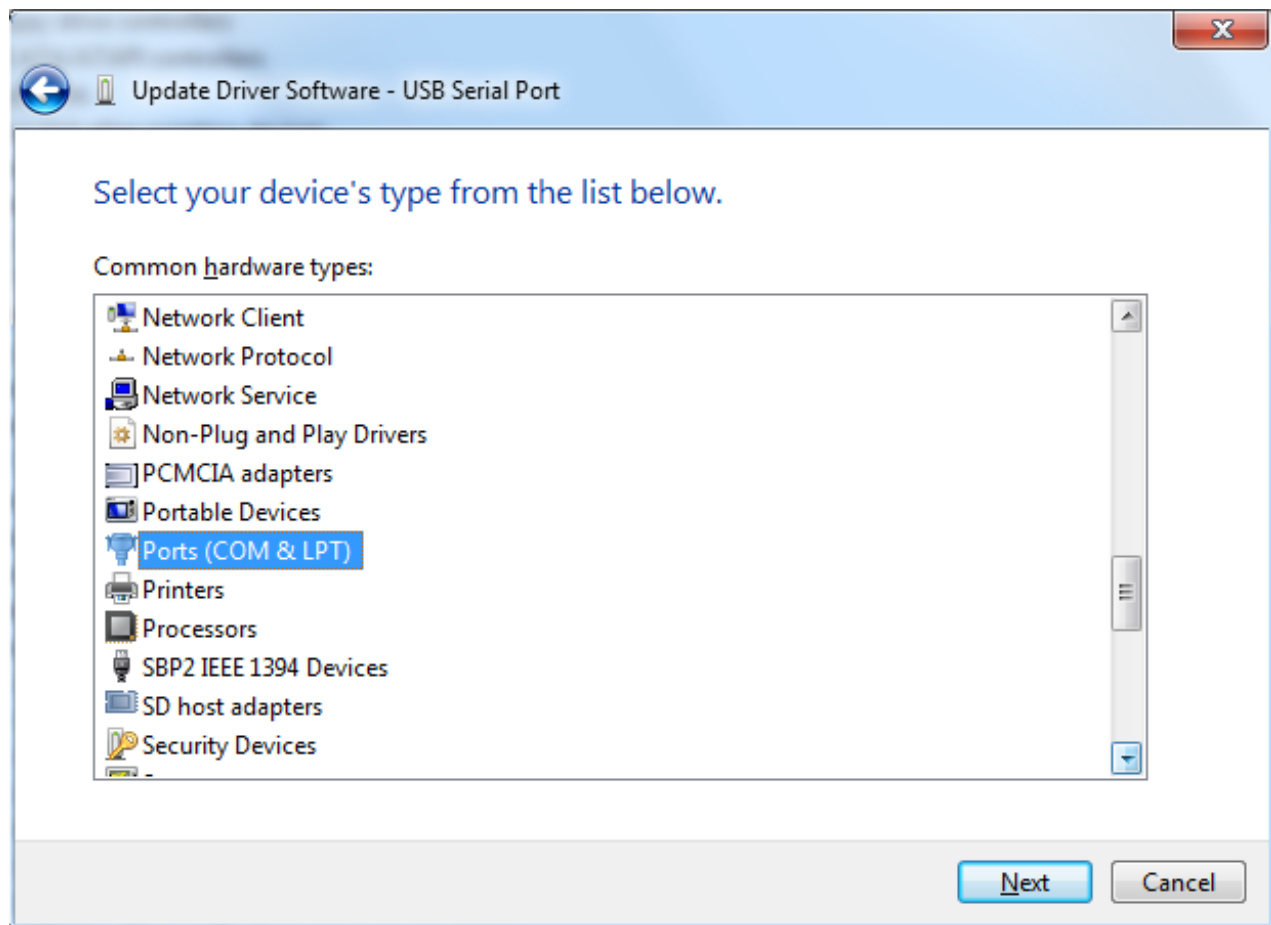
Select **“Browse my computer”**.



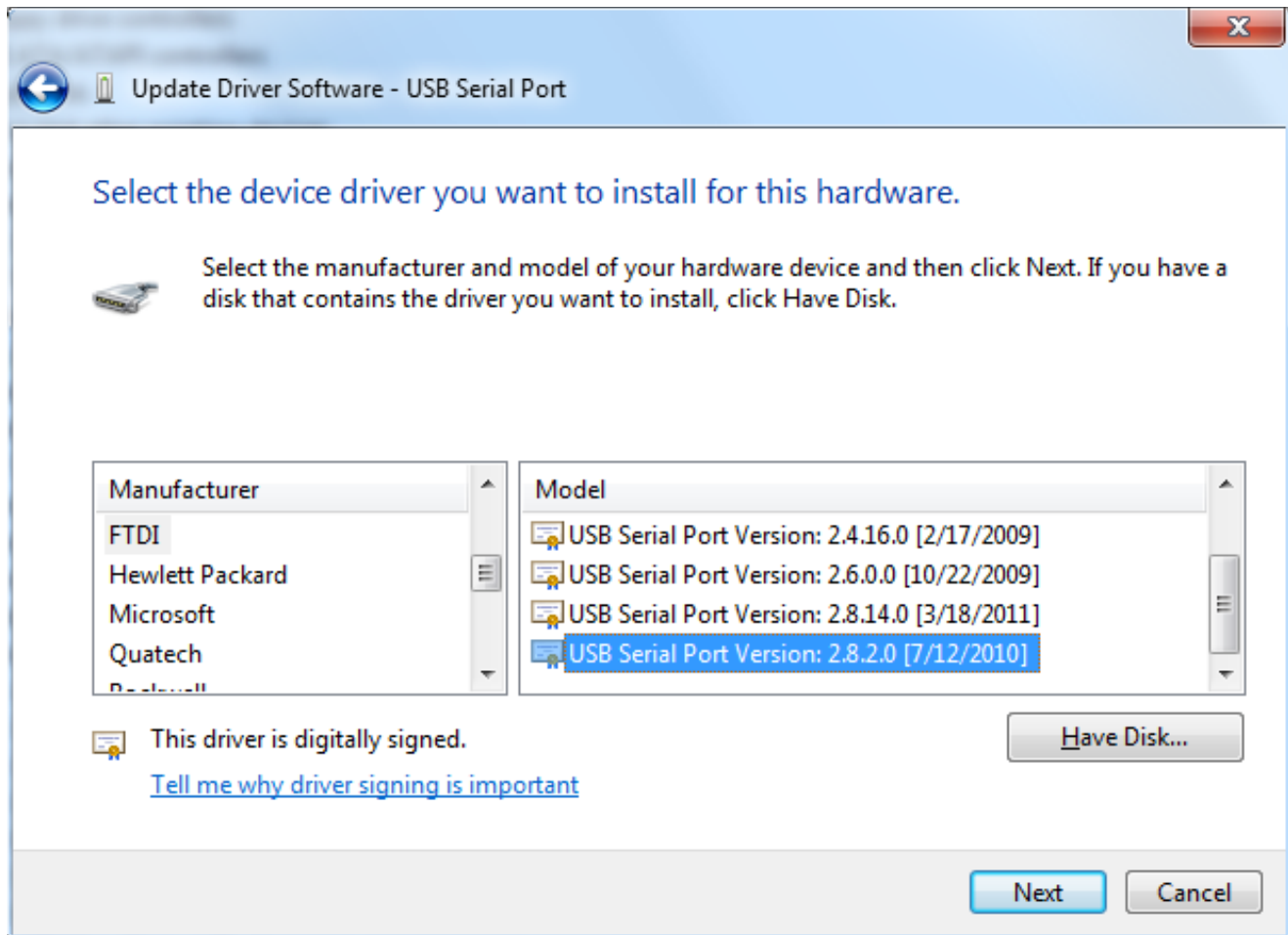
Then **“Let me pick ...”**



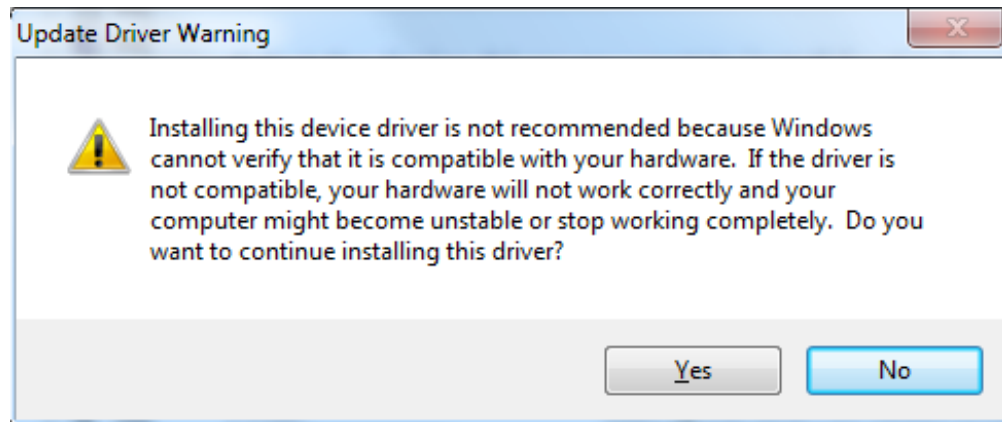
Select Device type as **Ports**.



FTDI drivers should be pre-installed with Windows. Select FTDI and then latest USB Serial Port Version. Manufacturer FTDI – USB Serial Port 2.8.2.0 (or other?)

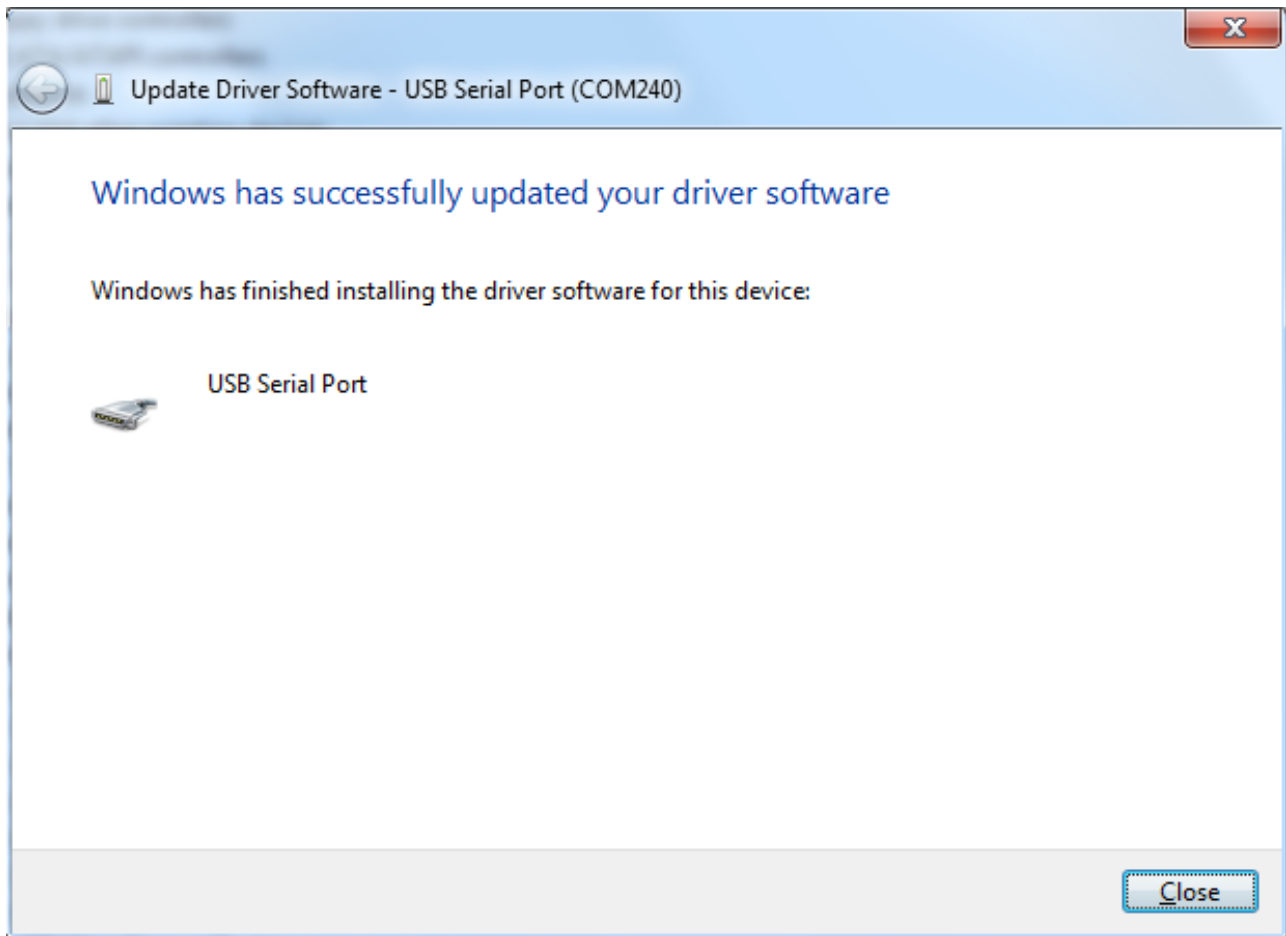


We have a different manufacturer ID, so you get this warning – choose “**Yes**”.

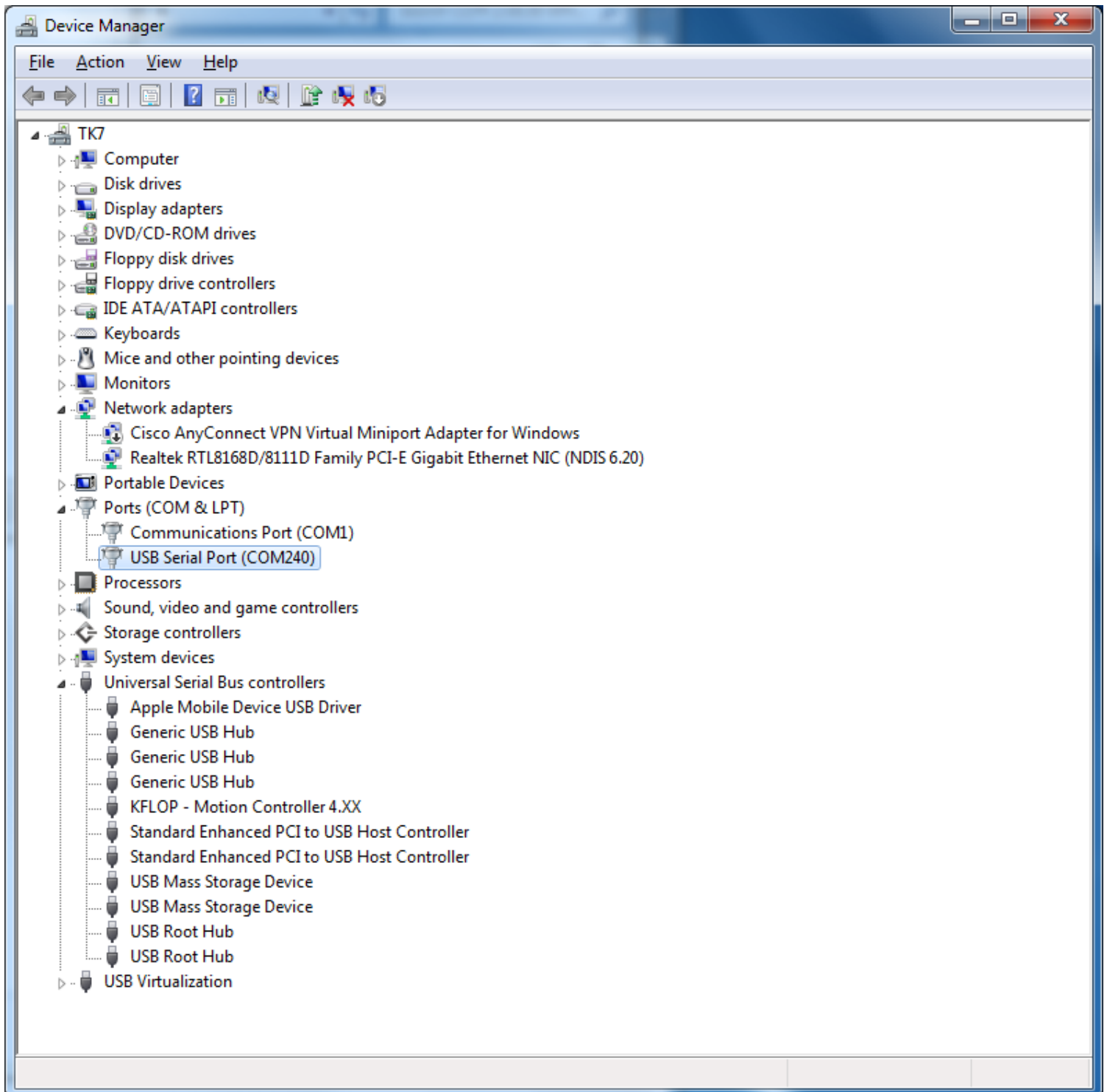




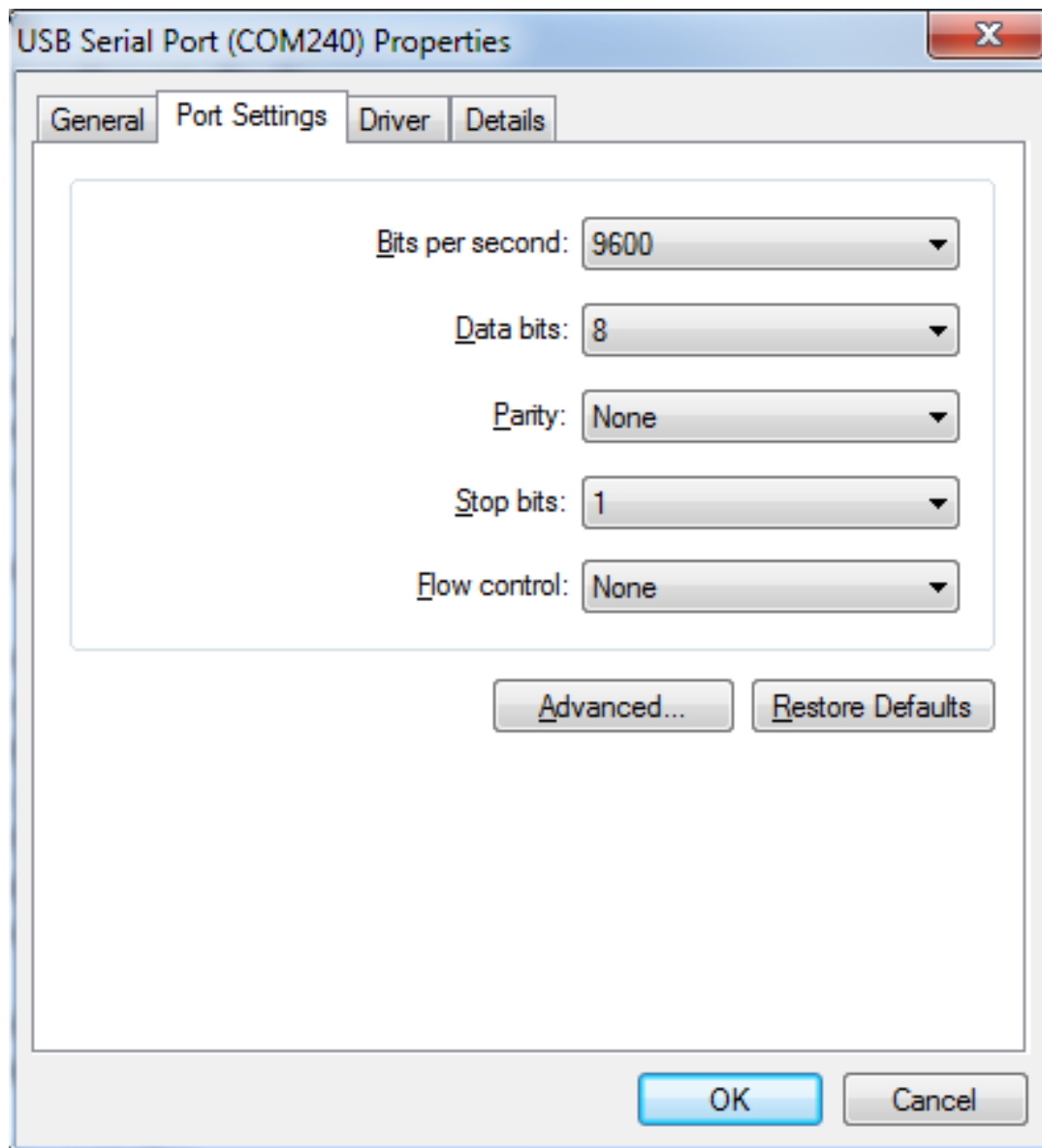
Installation should have been successful.



It should now work, but if you need to change the COM port number, do the following: Right click **“Properties”** – **“Port Settings”**.



Select **Advanced**.



Change to other COM port if necessary (COM2).

Advanced Settings for COM240

COM Port Number: COM2

USB Transfer Sizes  
Select lower settings to correct performance problems at low baud rates.  
Select higher settings for faster performance.

Receive (Bytes): 4096

Transmit (Bytes): 4096

BM Options  
Select lower settings to correct response problems.

Latency Timer (msec): 16

Timeouts

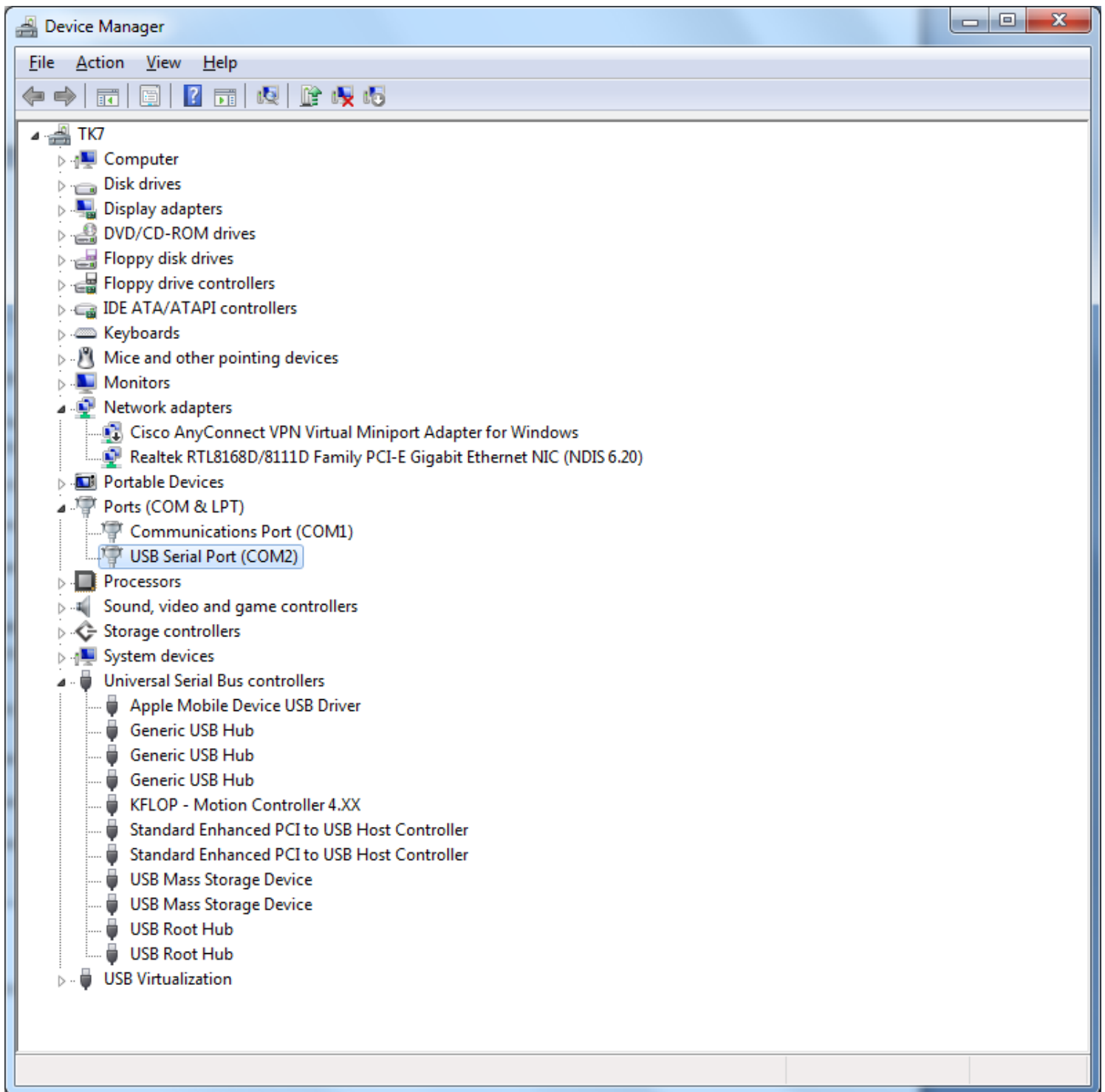
Minimum Read Timeout (msec): 0

Minimum Write Timeout (msec): 0

Miscellaneous Options

- Serial Enumerator
- Serial Printer
- Cancel If Power Off
- Event On Surprise Removal
- Set RTS On Close
- Disable Modem Ctrl At Startup

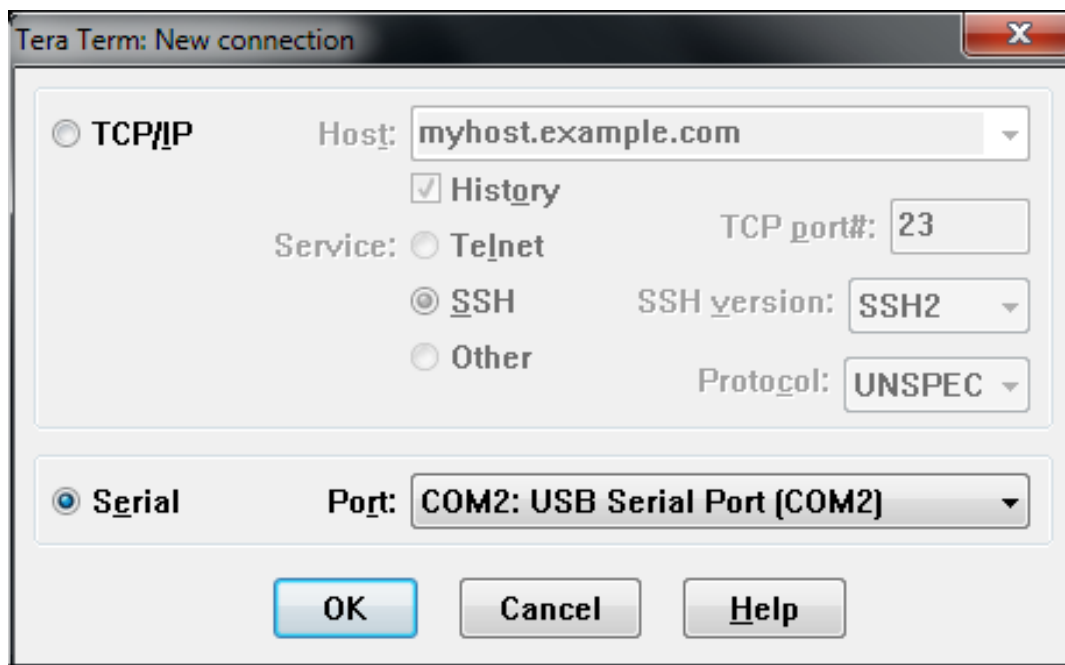
OK  
Cancel  
Defaults



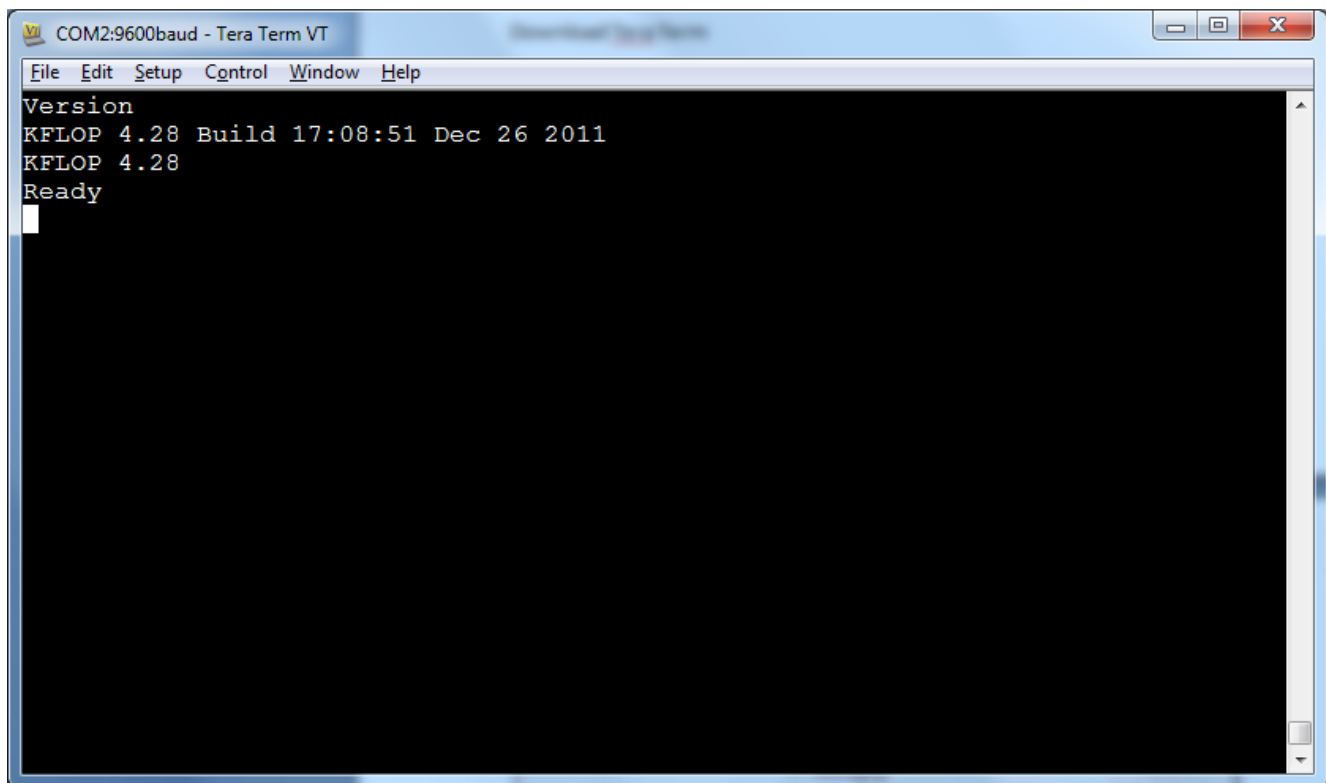
To test download and install a serial com program like Tera Term from:

<http://tssh2.sourceforge.jp>

Run it and select “**Serial**” and the Com port you defined.



Type **"Version"** and KFLOP should respond.



The image shows a screenshot of a terminal window titled "COM2:9600baud - Tera Term VT". The window has a menu bar with "File", "Edit", "Setup", "Control", "Window", and "Help". The terminal output shows the following text:

```
Version  
KFLOP 4.28 Build 17:08:51 Dec 26 2011  
KFLOP 4.28  
Ready  
█
```